

# **PowerTrack®**

## **Tool and Equipment Management**

# **Stop the Tool Loss!**

**Y**our organization depends on accurate information on tools and equipment. By knowing the locations of every tool and who is accountable, management can take control of escalating tool costs. In addition to achieving dramatic reductions in tool loss, employee and contractor productivity is increased by having tools and equipment where you need them, when you need them.



PowerTrack Tool Management utilizes a ready-to-run SQL server database to maintain your tool and equipment information. Tool lookups and transactions such as tool check-out, check-in and transfers may be run on a PC or Windows Mobile remote device. Tool history functions and comprehensive reports provide management with information on current inventory and tool activity.

### **Tracks Movements and Assignments**

During the check out process, tools are assigned to employees or contractors quickly and easily through the use of bar code scanning. An employee/

contractor ID is scanned or a name is selected from a list. A site and sub-location can be optionally selected. Each tool is scanned and a return date can be recorded. Tools can also be transferred between locations, without an employee/contractor assignment. The bottom line is that all tool movements are recorded to enforce employee/contractor accountability and accurate inventory.

### **Visibility to Tools and Equipment**

Whether in the office or in the field, it is important to know the location and availability of tools. The tool lookup capability in PowerTrack Tool Management is the most comprehensive in the industry. A user

can quickly search on an individual tool number or model number – or filter results based on category, description, manufacturer, sites, assignment (employee/contractor), business unit/department, and condition.

### **Analysis of Tool Usage and Activity**

Tool usage can be analyzed by a quick look up of transaction history or through activity reports. Transaction history can be filtered by date range, asset or model number, site, assignment (employee/contractor), business unit/department and by transaction type (check-in, check-out, transfer, new/retired asset). Activity reports point management to areas of heavy tool utilization or tools that are

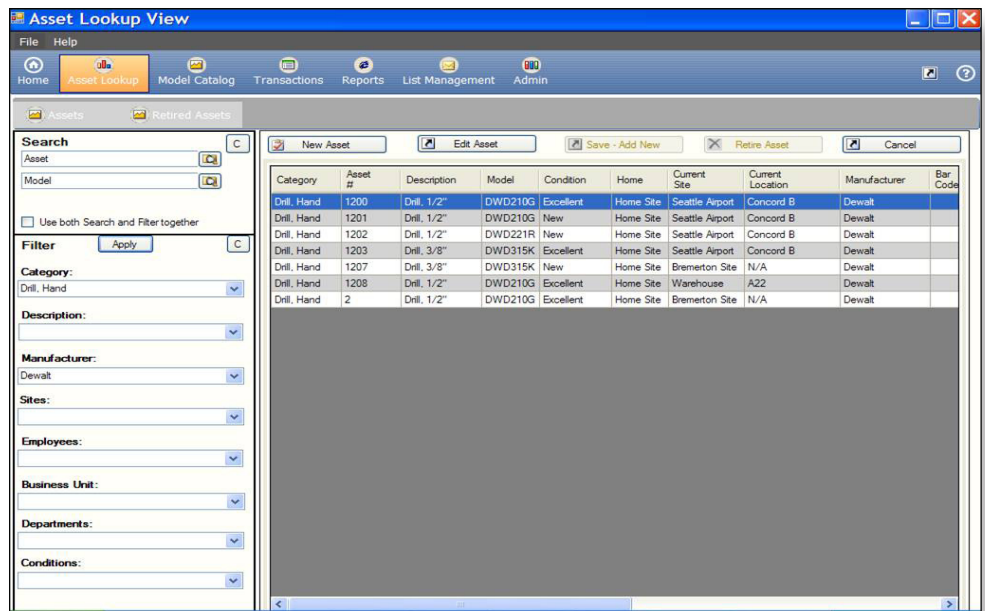
## **Benefits**

- Reduce loss, theft and neglect by making employees and contractors more accountable
- Have tools and equipment where you need them to improve productivity
- Visibility of tool and equipment inventory at job sites and in the warehouse
- Extensive reporting for effective management of your tool operation

rarely used, thus guiding future tool purchases.

## Rugged Handheld Support

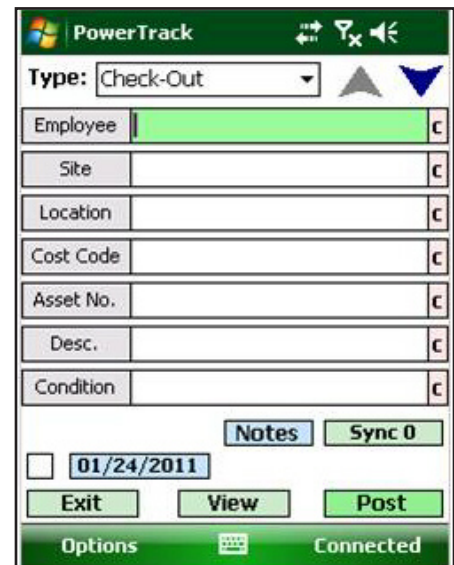
Tool lookups and transactions (check-in, check-out, and transfer) are supported in the field using rugged handheld devices and the PowerTrack Mobile application. Handheld units can operate in connected or disconnected mode. Transactions made while disconnected are transmitted to the server when a network connection is re-established. Wireless LAN and Wide Area Connectivity are supported.



## Features

- Tool catalog with model information and manufacturer
- Fast and easy set up of new tools
- Barcode label printing
- User defined tool categories and condition codes
- User defined sites with optional locations and cost codes
- Assignment to employees, contractors and contractor companies
- Transfers between job sites and warehouse locations
- Business unit and department support
- Quick look up of tools with comprehensive search and filtering
- Transaction look up with comprehensive search and filtering
- Tracking of maintenance dates
- Tool inventory and activity reports; Past due report
- Handheld support in connected or disconnected mode
- Excel import of tool data
- .Net Architecture with SQL database

## Customizable Screens



## About Compsee

Compsee, a division of Control Solutions, Inc., is a national leading Auto ID systems integrator, specializing in tracking software solutions. Visit our website to see how construction companies like yours are lowering costs and improving accuracy with PowerTrack.



# Compsee

A Division of Control Solutions, Inc.

5775 Soundview Drive, Suite 101 E  
Gig Harbor, WA 98332

Phone: (800) 852-3282  
sales@compsee.com

www.compsee.com

